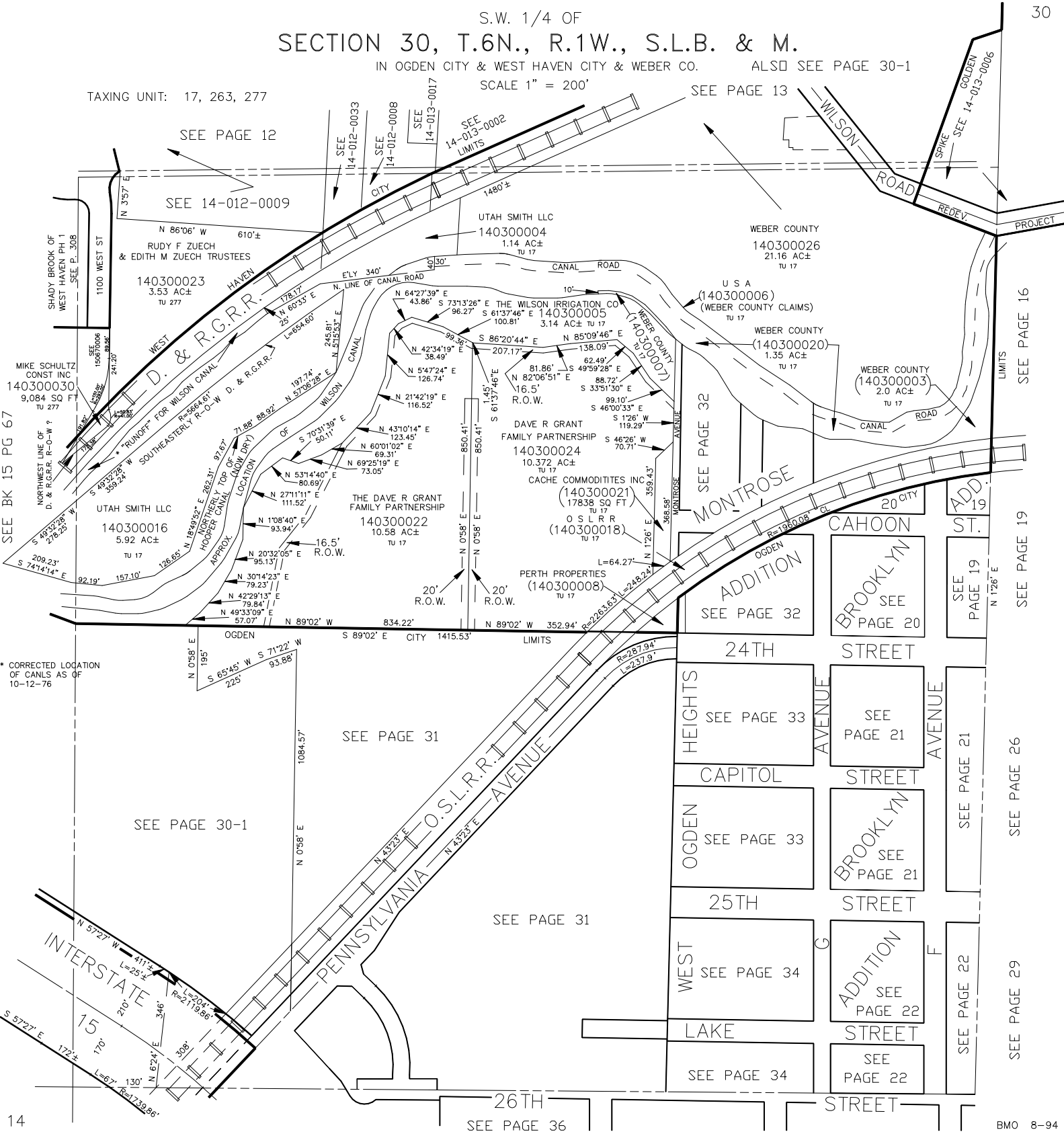


S.W. 1/4 OF SECTION 30, T.6N., R.1W., S.L.B. & M.

IN OGDEN CITY & WEST HAVEN CITY & WEBER CO. ALSO SEE PAGE 30-1

SCALE 1" = 200'

TAXING UNIT: 17, 263, 277



SEE BK 15 PG 67

SEE PAGE 12

SEE PAGE 30-1

14

SEE 14-012-0009

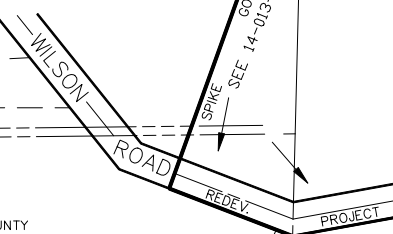
UTAH SMITH LLC 140300004 1.14 AC± TU 17

WEBER COUNTY 140300026 21.16 AC± TU 17

SHADY BROOK OF WEST HAVEN PH 1 SEE P. 308

140300023 3.53 AC± TU 277

SEE PAGE 13



SEE PAGE 32

MONTROSE AVENUE

OGDEN ADDITION SEE PAGE 32

HEIGTS SEE PAGE 33

OGDEN SEE PAGE 33

WEST SEE PAGE 34

LAKE SEE PAGE 34

SEE PAGE 36

SEE PAGE 16

SEE PAGE 19

SEE PAGE 26

SEE PAGE 29

BMO 8-94

\* CORRECTED LOCATION OF CANALS AS OF 10-12-76

SEE PAGE 30-1

SEE PAGE 31

SEE PAGE 31

CAHOON BROOKLYN SEE PAGE 20

STREET SEE PAGE 21

STREET SEE PAGE 21

STREET SEE PAGE 22

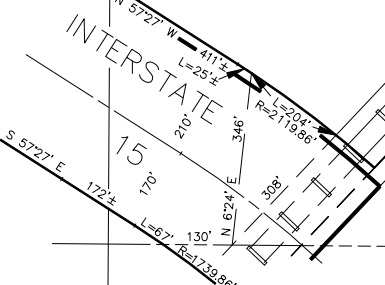
STREET SEE PAGE 22

ADD. ST. SEE PAGE 19

SEE PAGE 21

SEE PAGE 22

SEE PAGE 22



14